

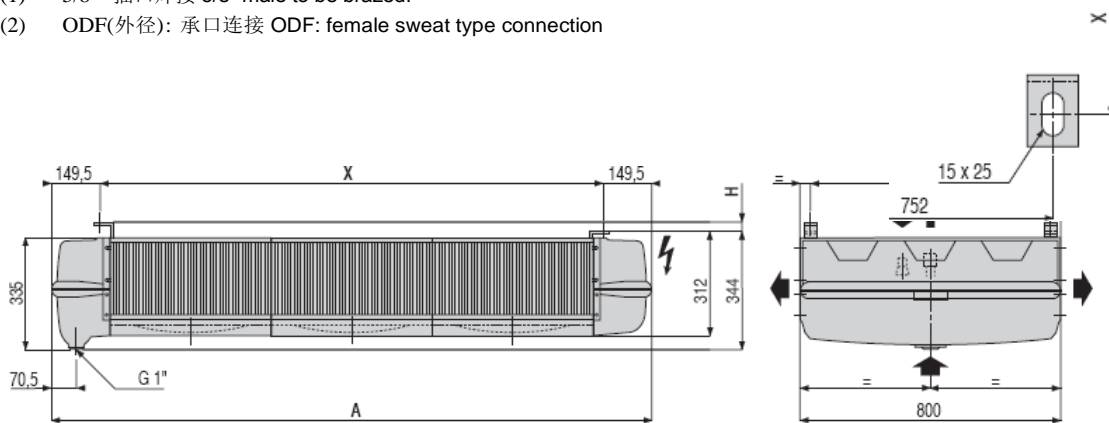
TA 双出风冷风机安装手册

TA INSTALLATION INSTRUCTIONS

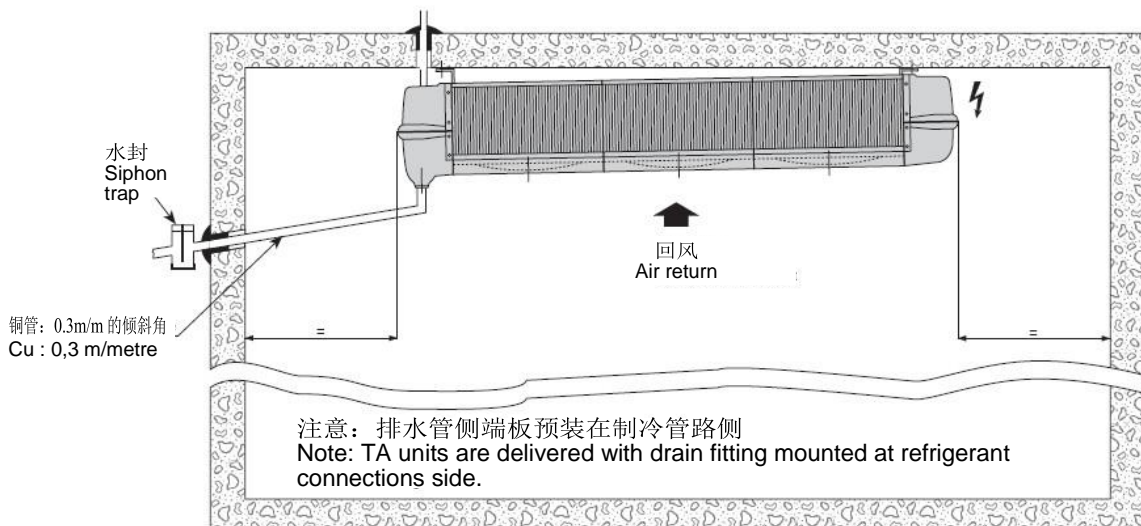
1. 冷风机尺寸表 DIMENSIONAL DATA

型号 Models	TA	1	2	3	4	5	6	7
尺寸	A	866	1366	1366	1366	1866	1866	2366
Dimensional data (mm)	H	17.5	17.5	17.5	17.5	35	35	35
	X	560	1060	1060	1060	1560	1560	1560
液管尺寸 Inlet	φ (1)	D 5/8'	D 5/8'	D 5/8'	D 5/8'	D 5/8'	D 5/8'	D 5/8'
气管尺寸 Outlet	φ ODF(2)	5/8'	5/8'	7/8'	7/8'	7/8'	1-1/8'	1-1/8'

- (1) 5/8'' 插口焊接 5/8'' male to be brazed.
 (2) ODF(外径): 承口连接 ODF: female sweat type connection

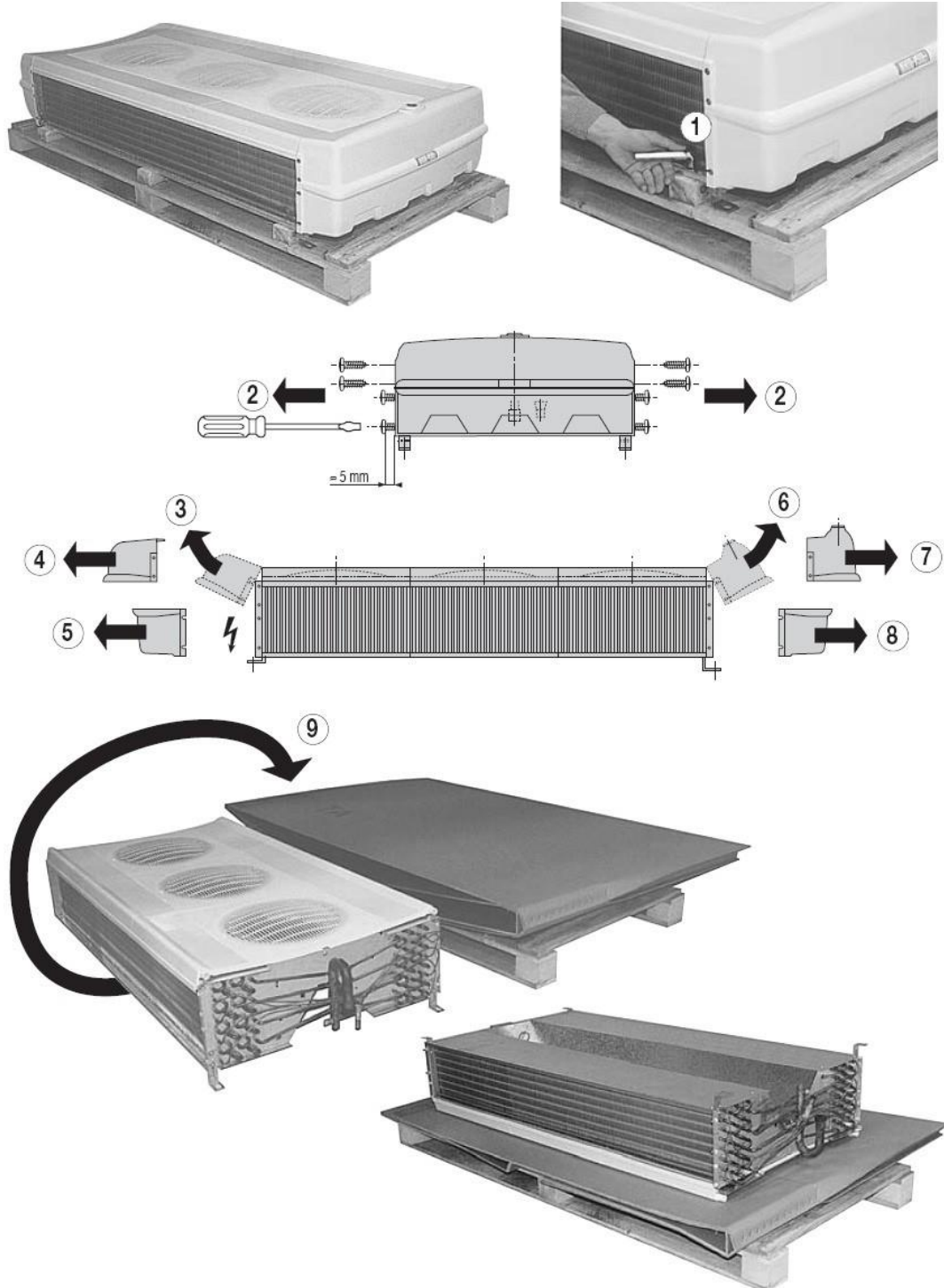


2. 冷风机的安装和管路连接 UNIT COOLER MOUNTING AND PIPING



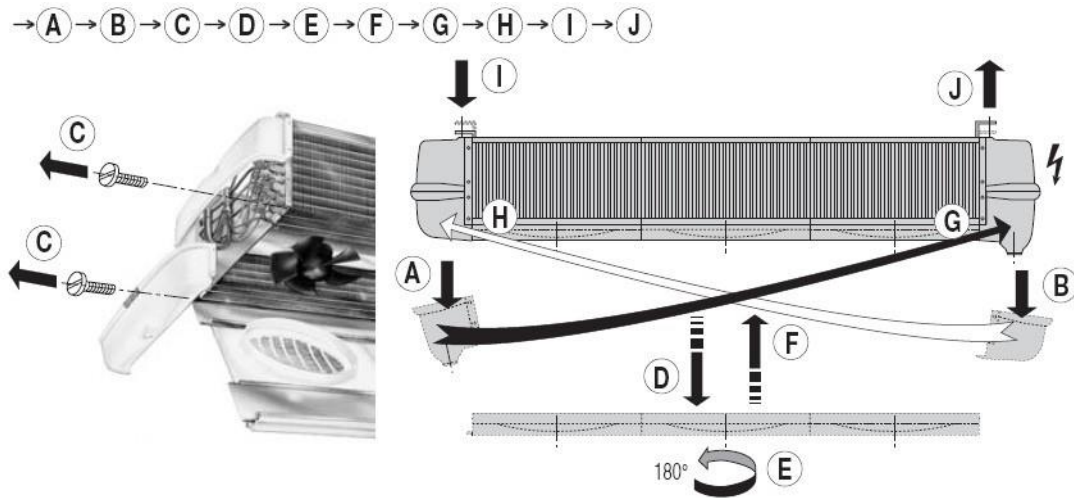
3. 冷风机拆卸步骤 UNIT COOLER TURN UP

→①→②→③→④→⑤→⑥→⑦→⑧→⑨

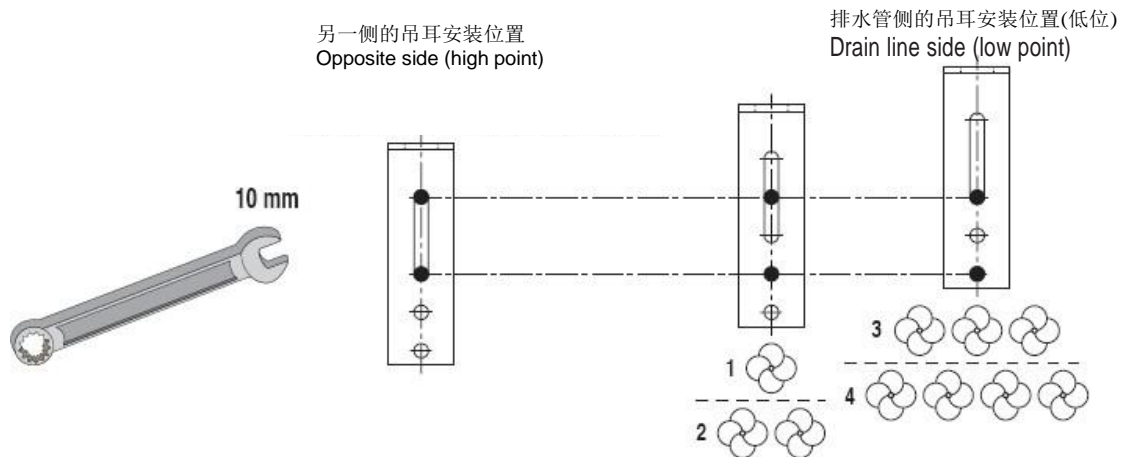


排水侧端板可安装在电气侧

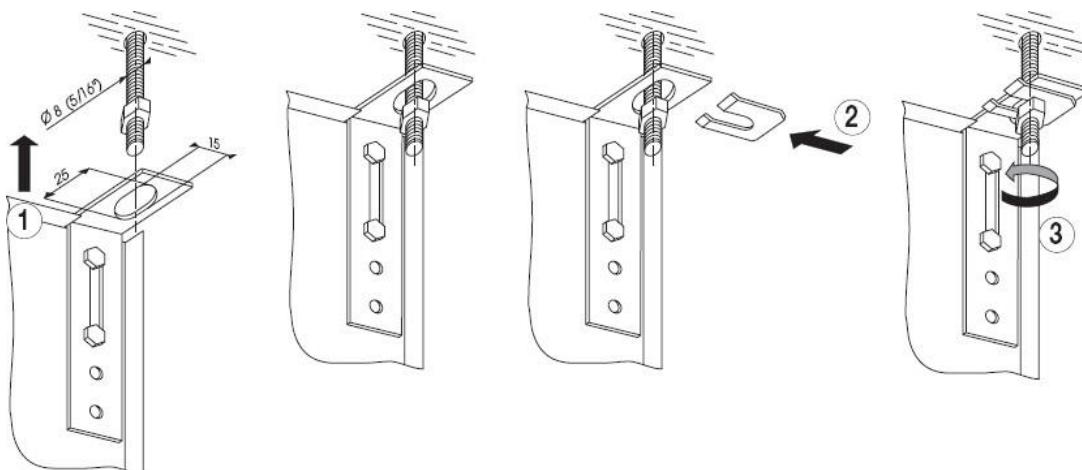
POSSIBILITY OF DRAIN FITTING LOCATION ON ELECTRICAL CONNECTIONS SIDE



吊耳的安装 FITTING OF SUPPORT ANGLES

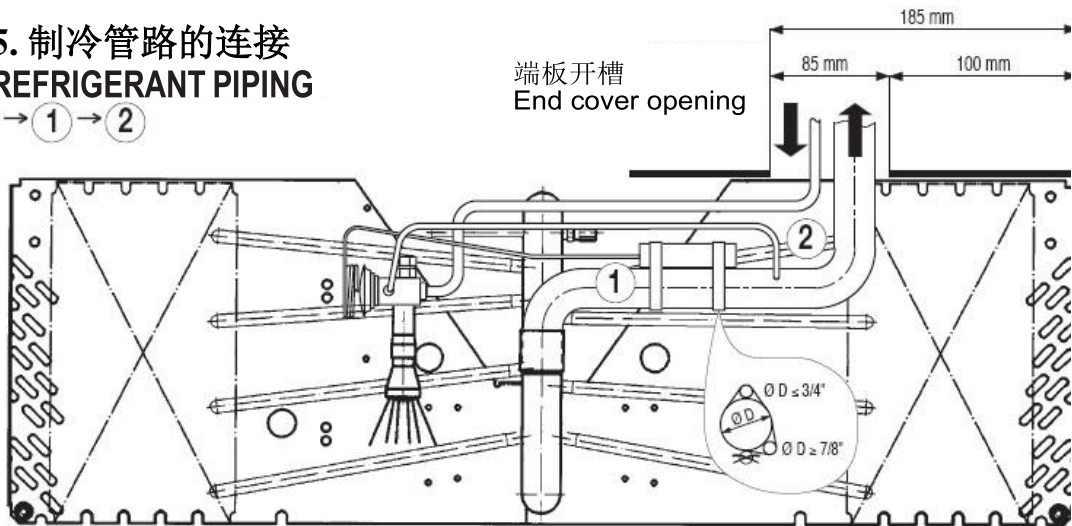


4. 吊装 FITTING TO CEILING → ① → ② → ③

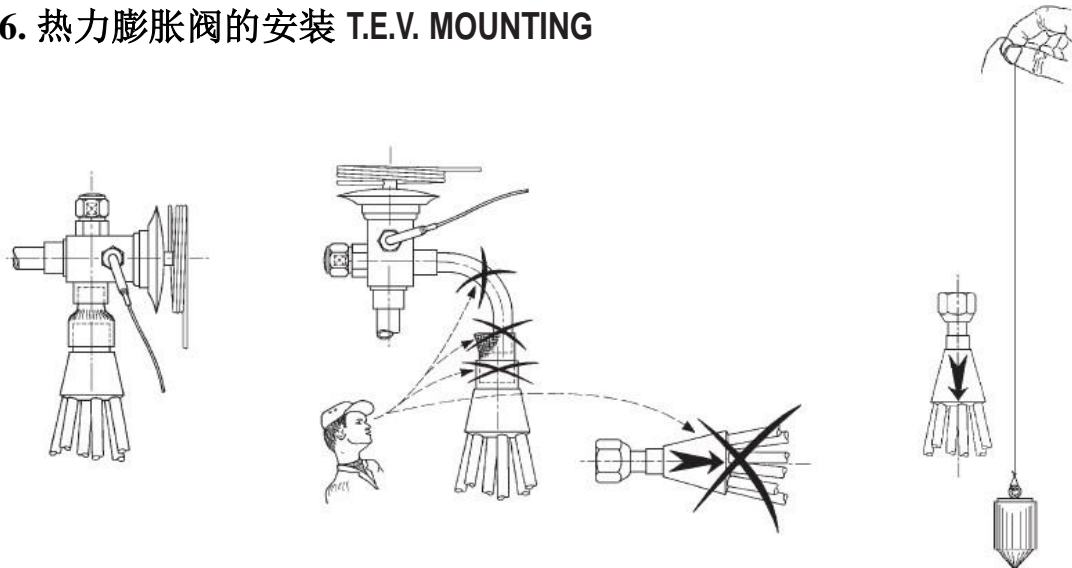


**5. 制冷管路的连接
REFRIGERANT PIPING**

→ ① → ②

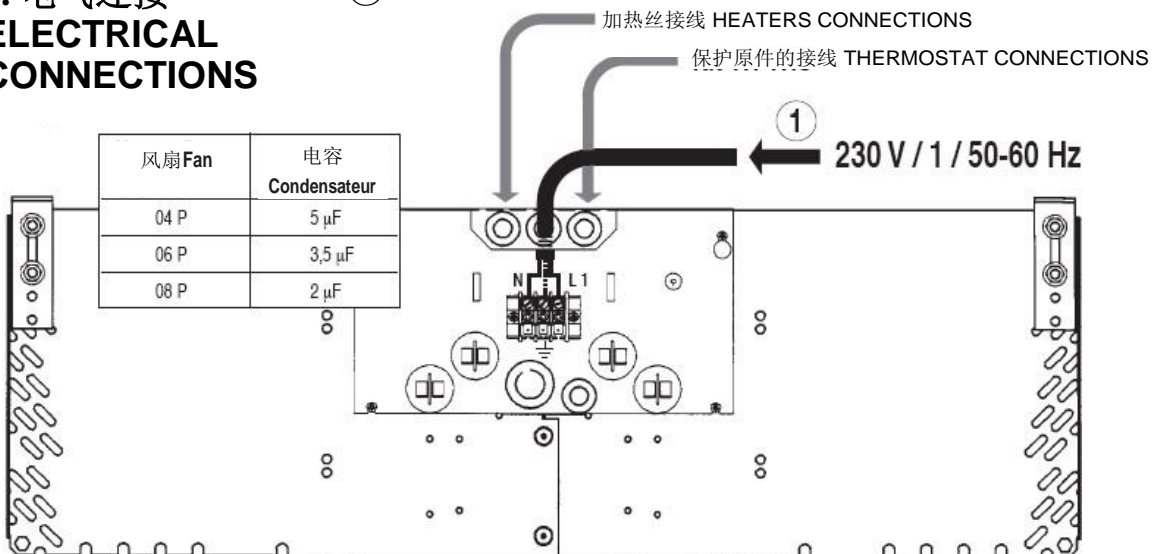


6. 热力膨胀阀的安装 T.E.V. MOUNTING

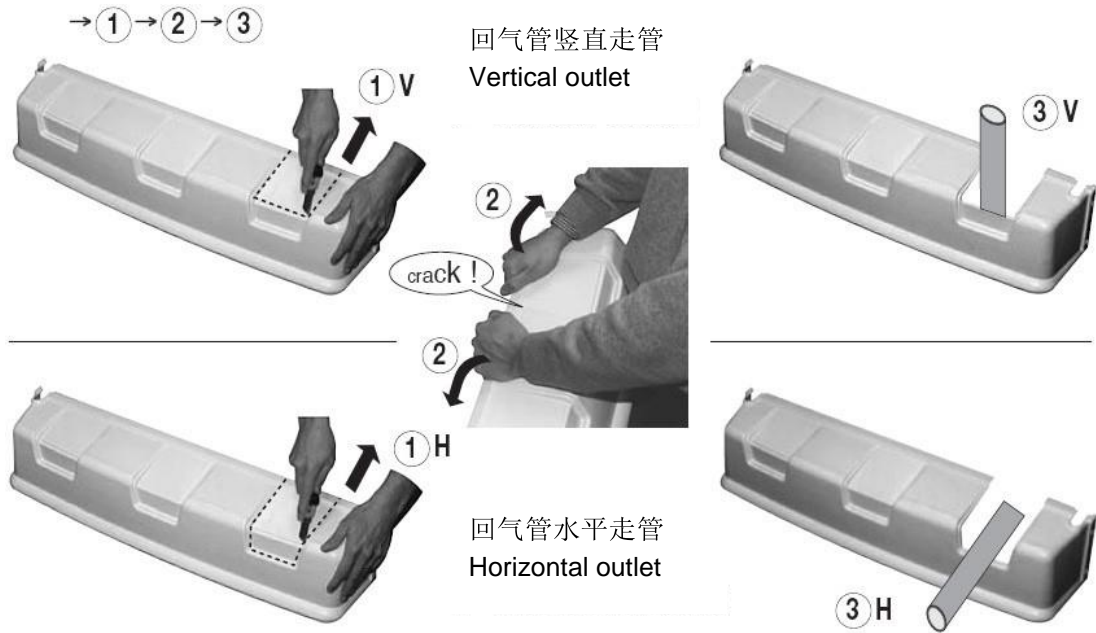


**7. 电气连接
ELECTRICAL CONNECTIONS**

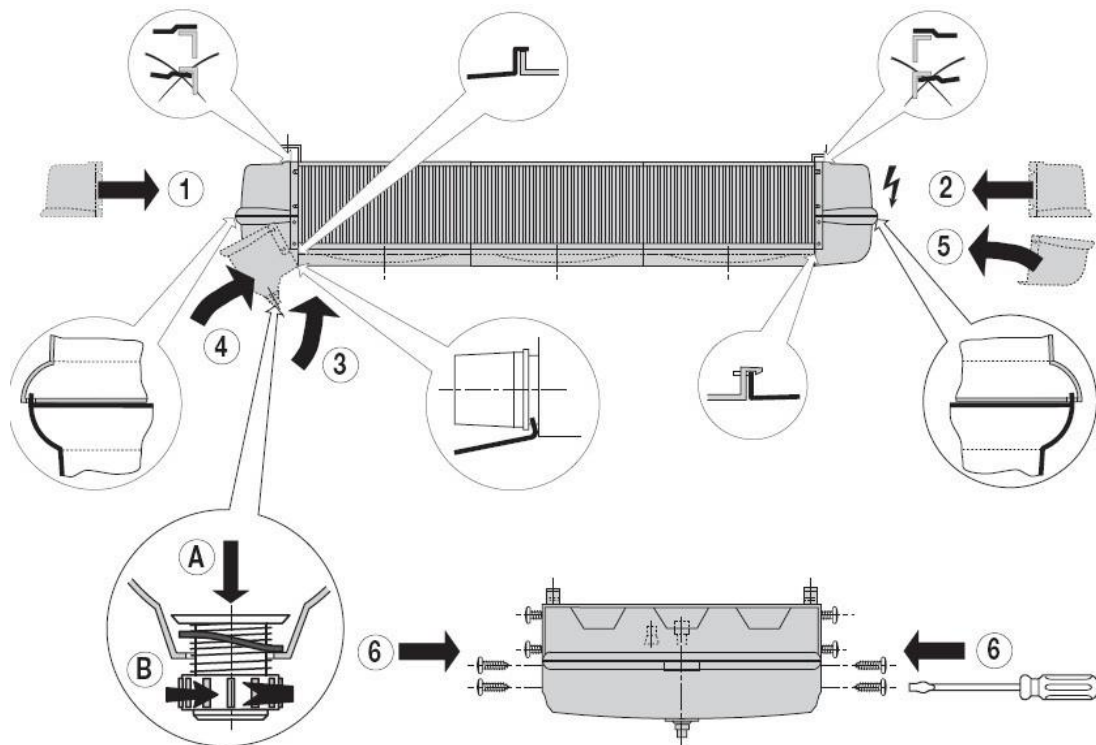
→ ①



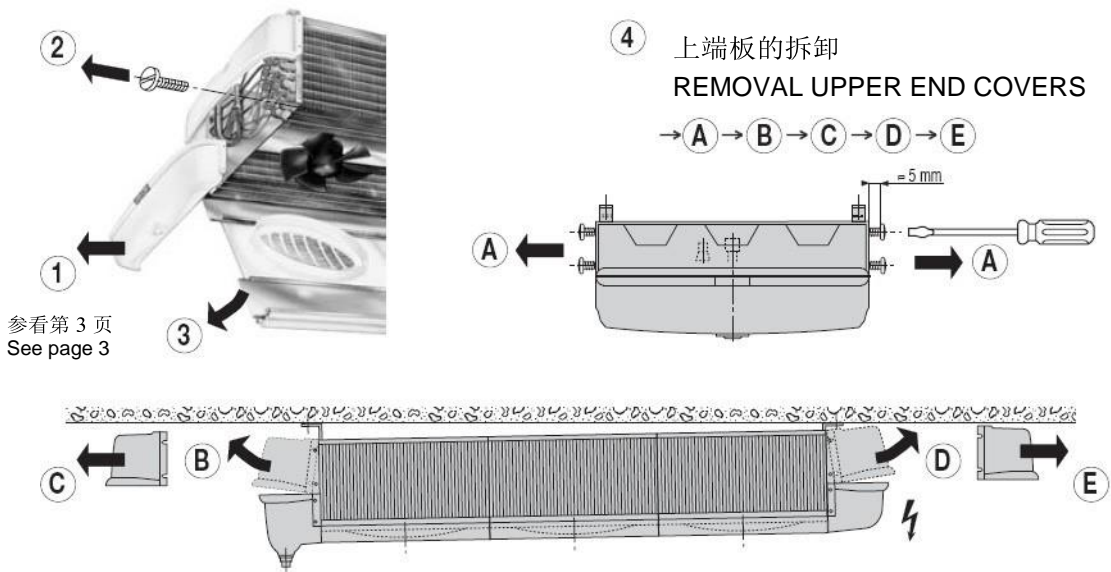
8. 端板切槽 CUTTING OF END COVER



9. 端板安装 FITTING OF END COVER → ① → ② → ③ → ④ → ⑤ → ⑥



10. 维护拆卸 ACCESS TO COMPONENTS → ① → ② → ③ → ④



11. 维护 MAINTENANCE

选用非腐蚀性溶液或者专门的清洗剂定期进行清洗

盘管：用一层塑料膜保护电机，低于 3Bar 的水压，正面冲刷翅片边缘
风叶，挡风板，外壳

在开启及平时定期检查疏松的螺丝，及电气端子上螺丝的是否有松掉
故障

电机不转：在启动前，先检查供电。确认风叶可随意转动。

整机振动：检查风叶，替换故障部件，确认风叶上无任何结冰

Clean periodically with a non aggressive solution and rinse with clean water:

- coil: protect the motors with a plastic film, maximum 3 bars water pressure and jet facing the fin edges.
- fan blades, fan guards and casing.

At start up and periodically, check for eventual loosen screws, the condition and tightening of the electrical connection screws.

FAILURES

Motor does not turn: before any intervention, check the electric supply. Make sure that the fan blade is turning freely.

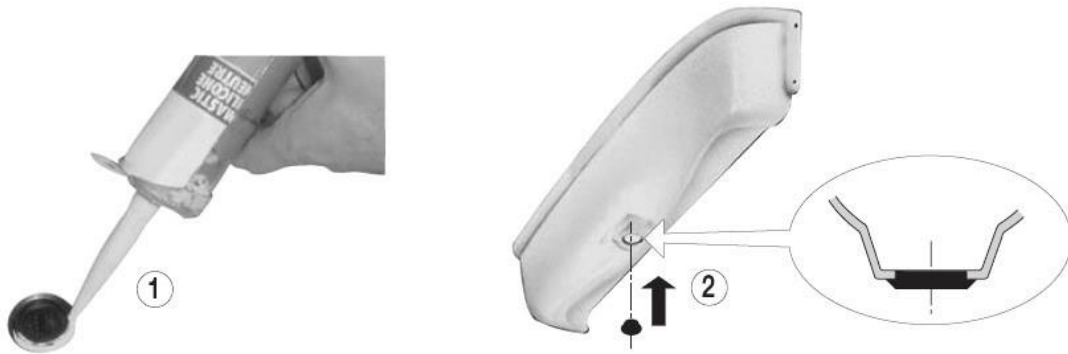
The unit vibrates: check the fan blades and replace the defective one, make sure that fan blades are free of ice.

12. 冷凝水水泵的使用 USE OF A CONDENSATE PUMP

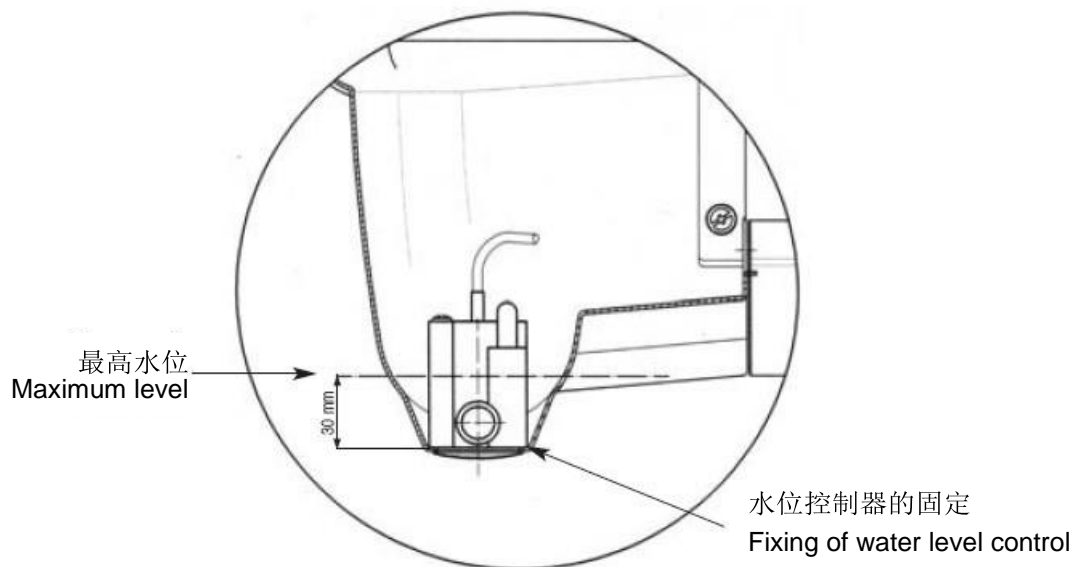
A. 排水孔的密封

SEALING OF DRAIN HOLE

→ ① → ②



B. 水位控制安装位置 LOCATION OF WATER LEVEL CONTROL



警告:

只可使用带远程水位控制的冷凝水水泵

WARNING

Only use condensate pumps with remote water level control.

13. 零部件 SPARE PARTS

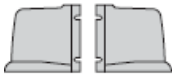
风机组件 Fan assembly

风扇面板 Fan panel

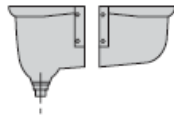
上端板 Upper covers

下端板 Bottom covers

上端板
Upper covers

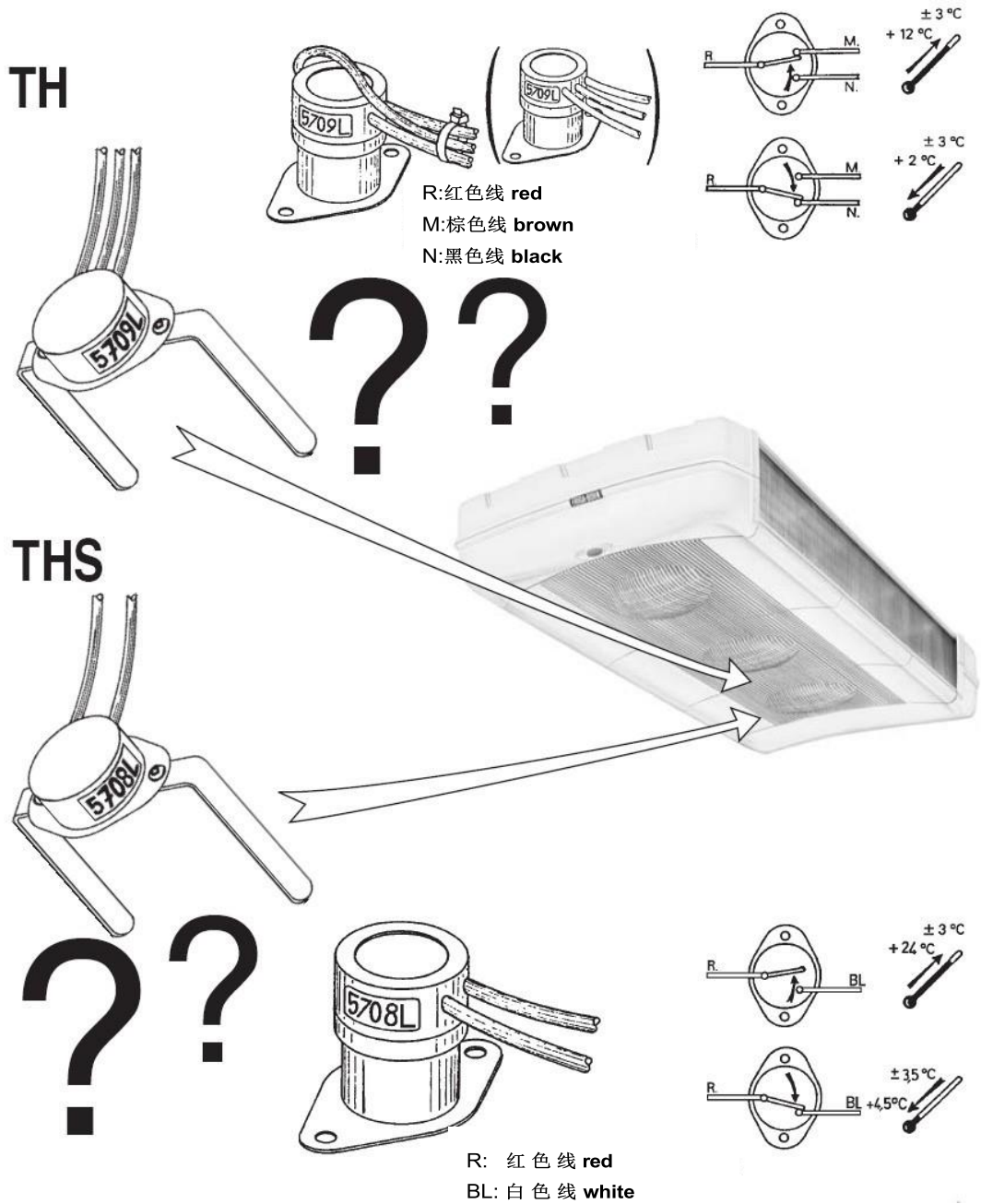


下端板
Bottom covers



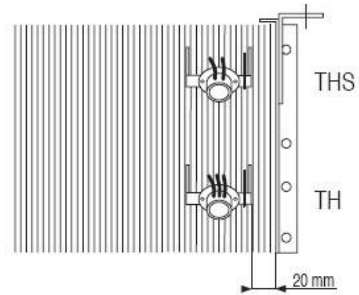
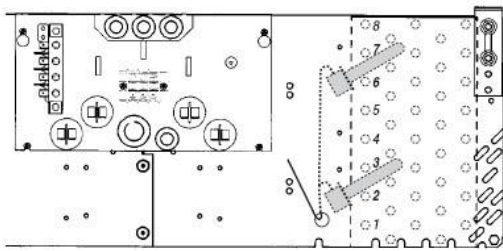
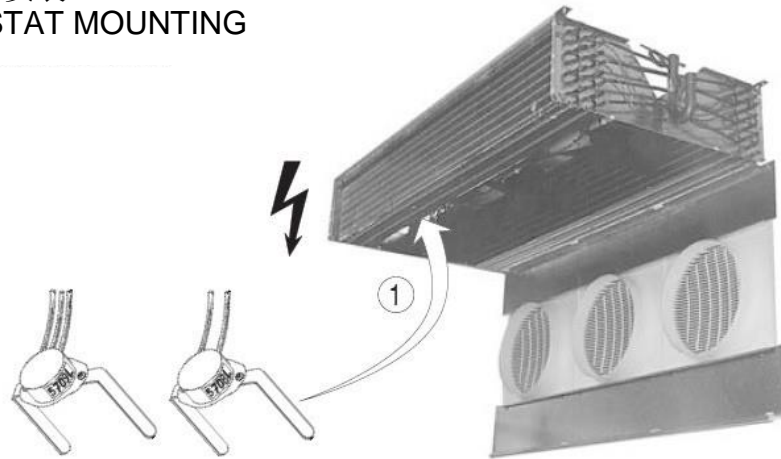
注意事项 — NOTES 1

1. (除霜终止+风扇延时开关 TH 5709L)及 (加热丝过热保护 THS 5708L)
(FAN DELAY TH 5709L)及 (HEATER SWITCH THS 5708L)

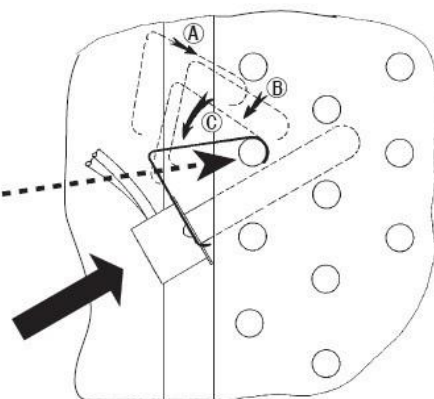
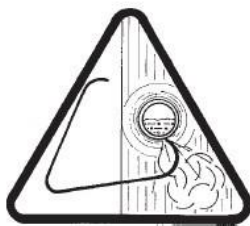


2. 温控器的安装
THERMOSTAT MOUNTING

→ ① → ②

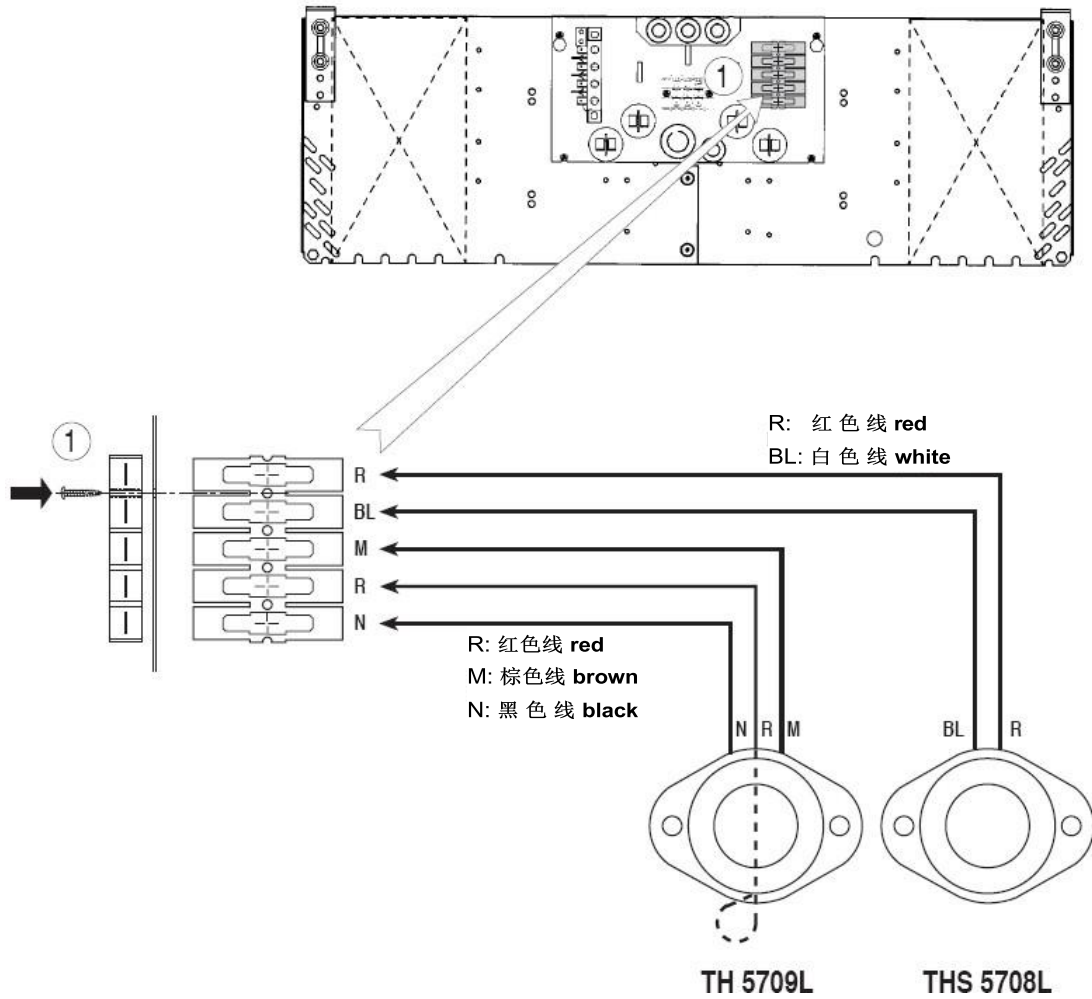


② → A → B → C

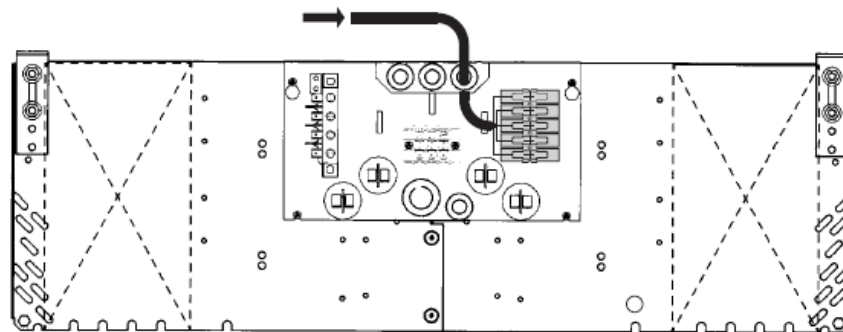


3. 温控器接线端子的安装 TERMINAL BLOCK MOUNTING

①

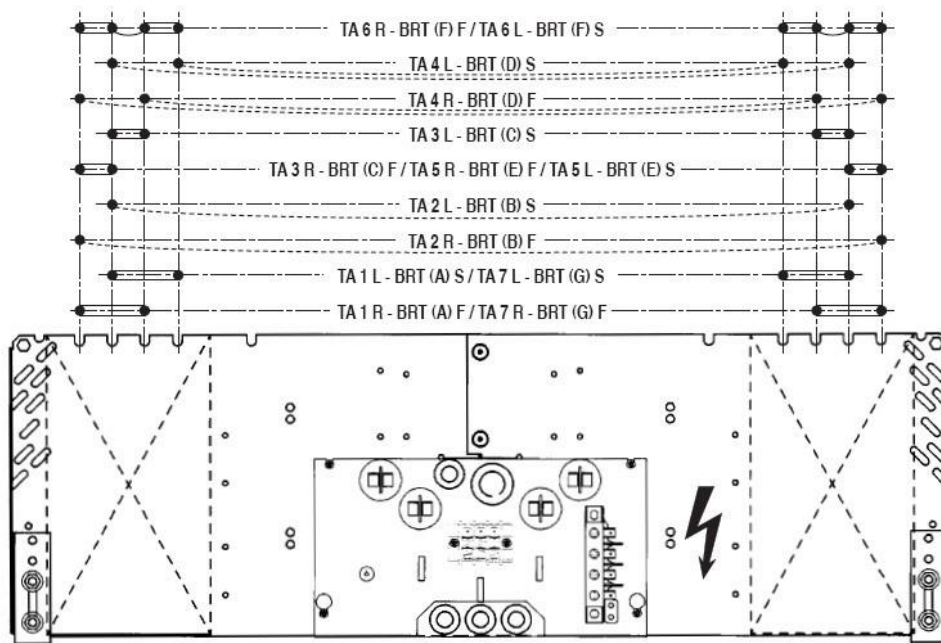
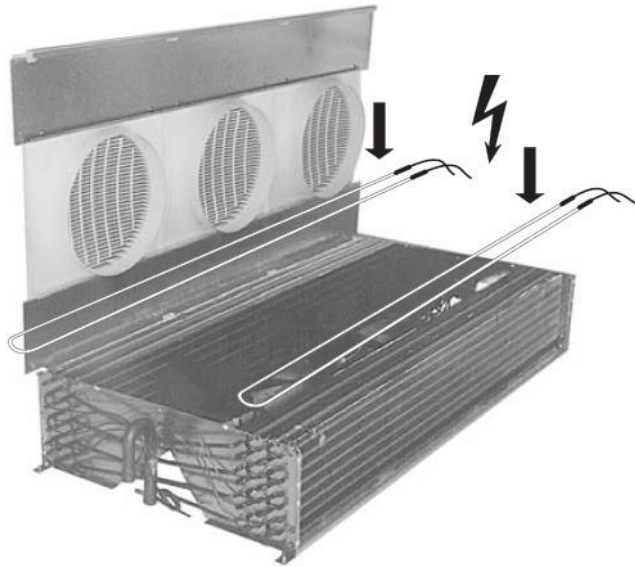


4. 温控器的接线 THERMOSTAT CONNECTIONS

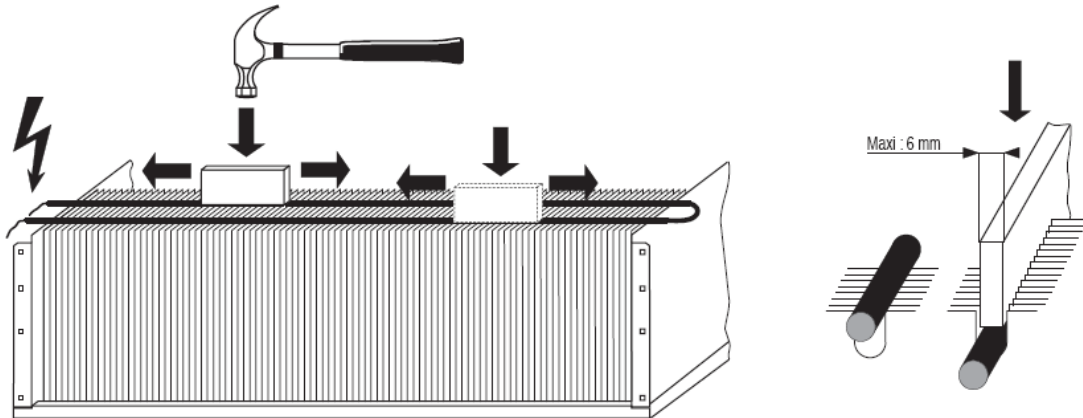


注意事项二 NOTES 2

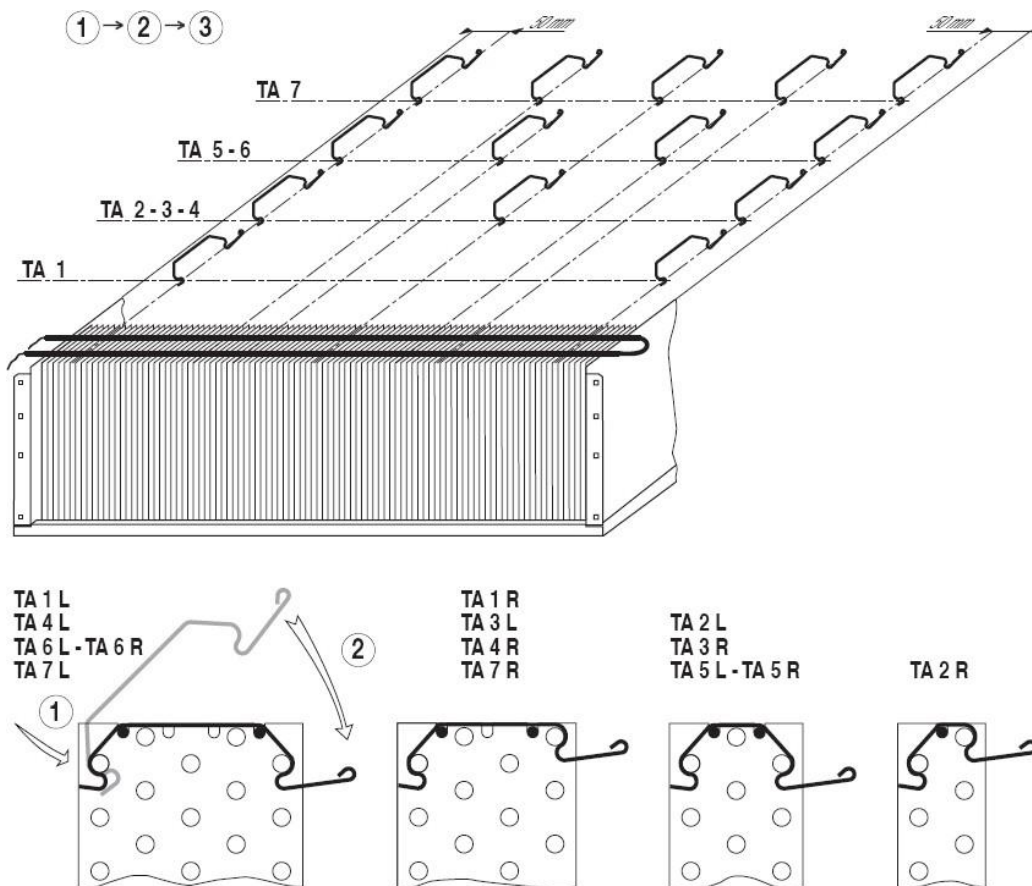
1. 加热丝的安装位置 HEATER LOCATIONS

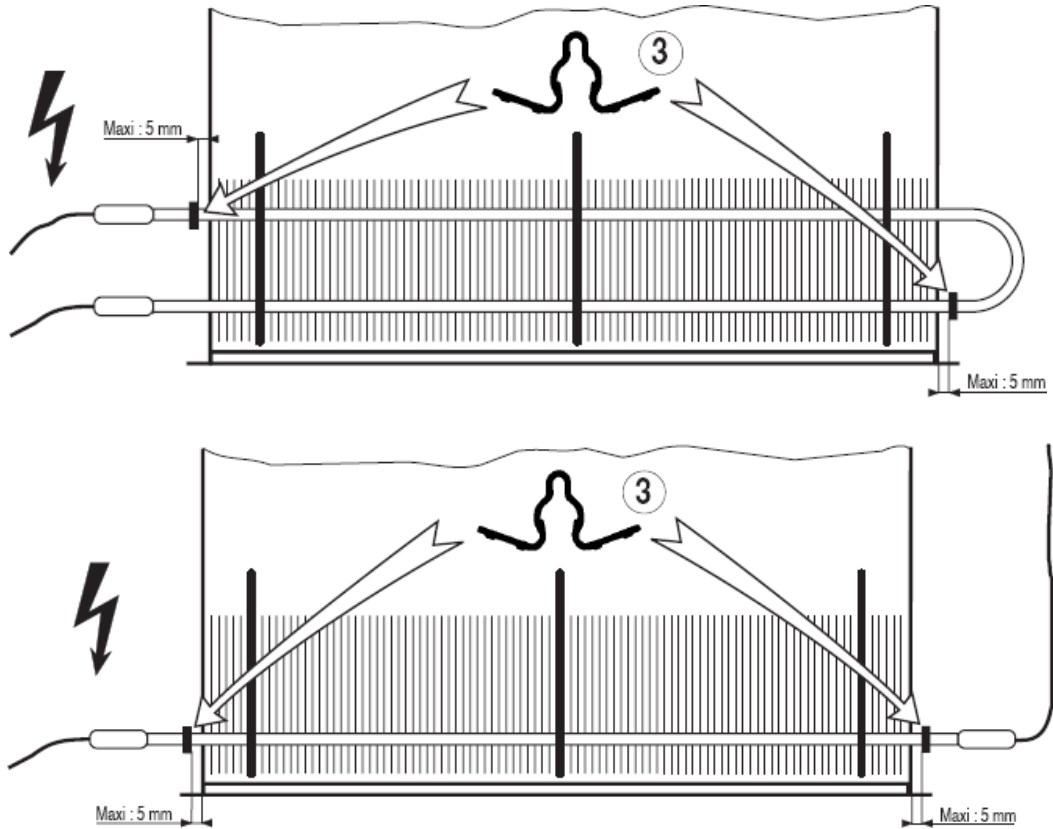


2. 加热丝的安装 HEATERS MOUNTING

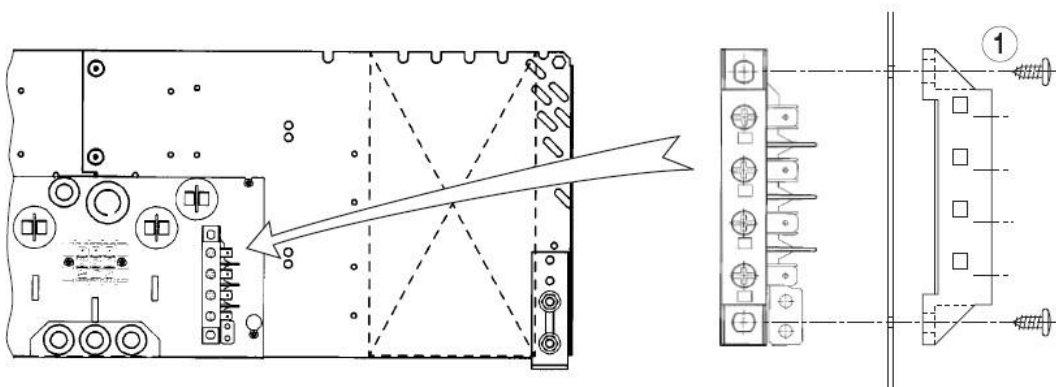


3. 加热丝固定夹的安装位置及安装方式
CLIPS LOCATION AND MOUNTING



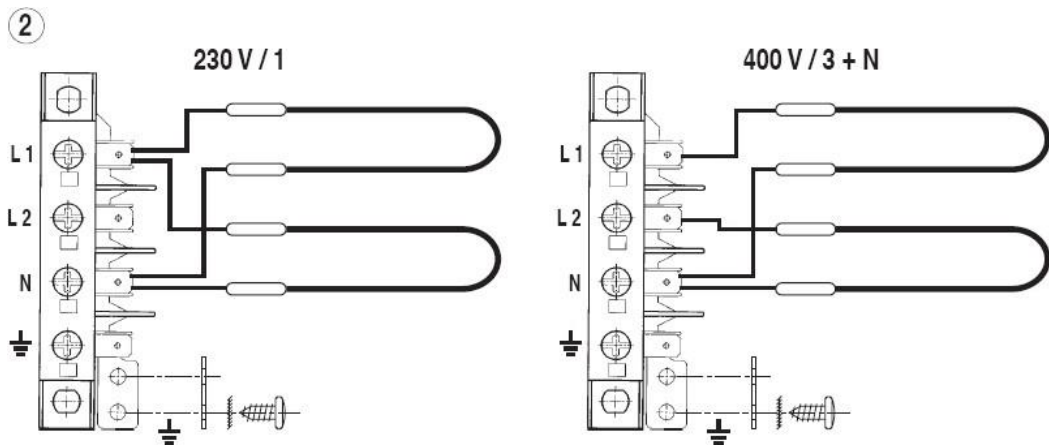
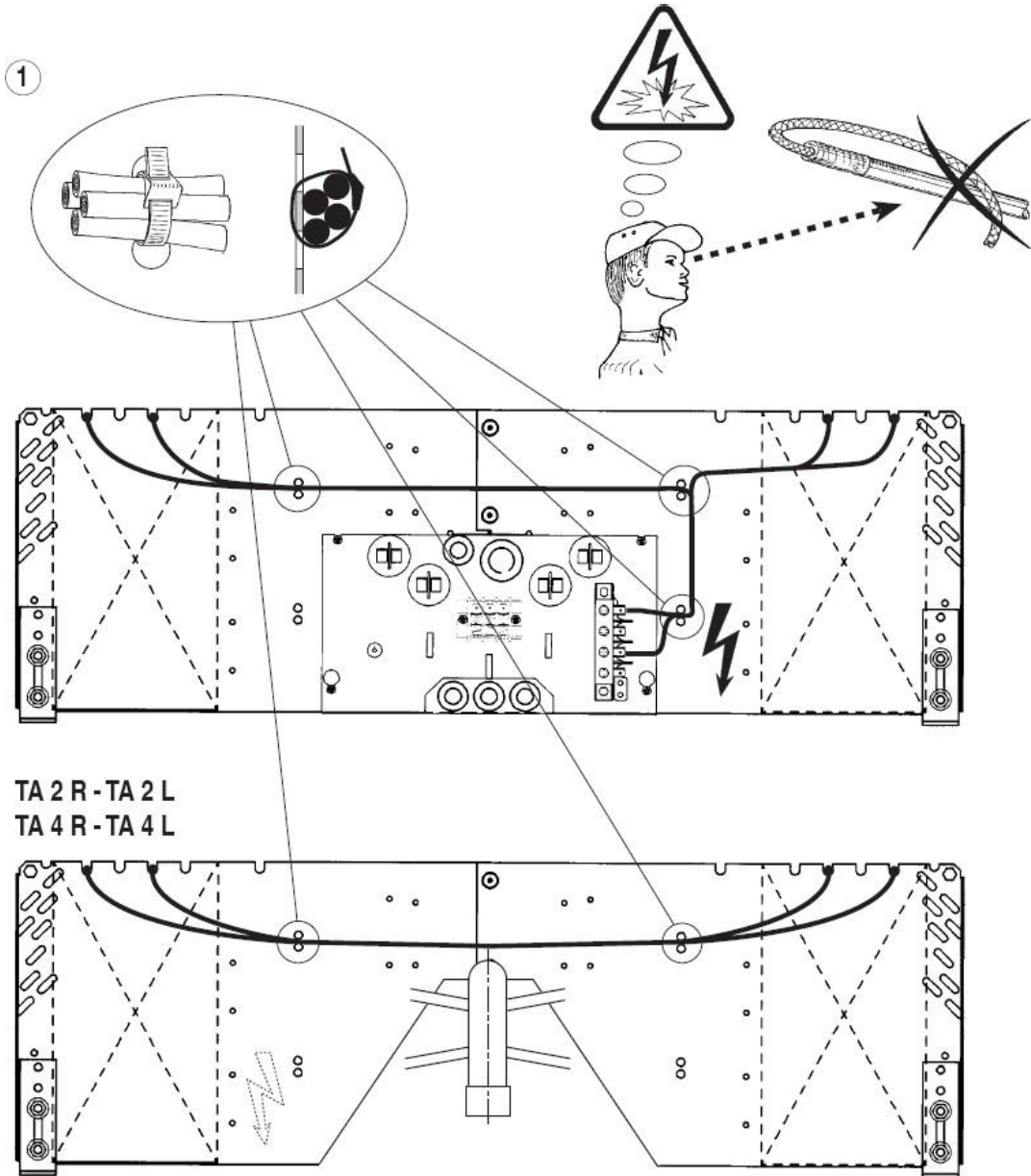


4. 加热丝接线端子的安装 TERMINAL BLOCK MOUNTING → ①



5. 除霜加热丝的接线 DEFROST HEATER CONNECTION → ① → ②

型号Models	TA	1	2	3	4	5	6	7	
除霜加热丝 Electric defrost	230V/1	总功率 Total W	800	800	1200	1200	1800	3000	3200
		总电流 Total A	3.5	3.5	5.2	7.0	7.8	13.0	14.0
	400V/3+N	总功率 Total W	-	-	-	-	-	3000	3200
		总电流 Total A	-	-	-	-	-	6.5	6.9



6. 加热丝的电气接线 ELECTRIC CONNECTION

